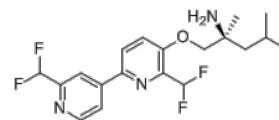


Product Name : LX9211
Cat. No. : PC-72847
CAS No. : 1815613-42-3
Molecular Formula : C₁₉H₂₃F₄N₃O
Molecular Weight : 385.407
Target : AP2-associated Kinase 1 (AAK1)
Solubility : 10 mM in DMSO



Biological Activity

LX9211 (BMS-986176) is a highly selective, CNS-penetrable, and potent **AAK1** inhibitor with IC₅₀ of 2.0 nM.

BMS-986176 showed excellent efficacy in two rodent neuropathic pain models and excellent central nervous system (CNS) penetration and target engagement at the spinal cord with an average brain to plasma ratio of 20 in rat.

BMS-986176 exhibited favorable physicochemical and pharmacokinetic properties, had an acceptable preclinical toxicity profile

BMS-986176 has completed phase I trials with good human pharmacokinetics and minimum adverse events and is currently in phase II clinical trials for diabetic peripheral neuropathic pain.

References

Luo G, et al. *J Med Chem*. 2022 Mar 8. doi: 10.1021/acs.jmedchem.1c02131.

Caution: Product has not been fully validated for medical applications. Lab Use Only!

E-mail: tech@probechem.com